

# Better lives

## *at Earlsdon Park*

### > Welcome

to our vibrant community

### > Explore

the local surroundings

### > Enjoy

the activities on offer



Discover a taste  
of Earlsdon Park

Edition 1 - June 2023



# Welcome to Earlsdon Park Village

We're delighted to welcome you to Earlsdon Park Village, an ExtraCare Charitable Trust retirement village.

Located in the Earlsdon area of Coventry, on the site of the former Butts Technical College, our unique village provides a fulfilling lifestyle with everything under one roof.

We believe that later life is a time for doing more rather than less, staying independent and active – and we've got plenty to choose from.



‘  
*I love living here in the village. There's lots of entertainment if you want it. I have made many new friends and I have my dog with me. I feel safe and free from the usual household problems... life is good*

Earlsdon Park Village resident







## Dine in our village bistro

Open daily, serving hot and cold food, drinks, snacks and desserts. Head to the bistro for a copy of the current menu, special offers and details of the daily breakfast and Sunday carvery menus.





# Enjoy a fantastic range of facilities



Bistro/  
restaurant



Dementia &  
Mental Wellbeing  
Service



Greenhouse



Gym



Hair and  
Beauty Salons



Hobby Room



Laundrette



Library/ IT Suite



Village shop



Wellbeing suite

## Weekly activities

When you feel like getting active and being sociable, our superb range of weekly activities will help you make the most of each day. With so many new like-minded friends and neighbours, you'll never be short of things to do.

Choose from a range of activities each week including:

- Tai chi
- Arts and crafts
- Walking football
- Circuit training
- Knit and natter
- Quiz night

- Mindfulness activities
- Outdoor exercise classes
- Evening entertainment

Ask one of the team for our activities schedule.





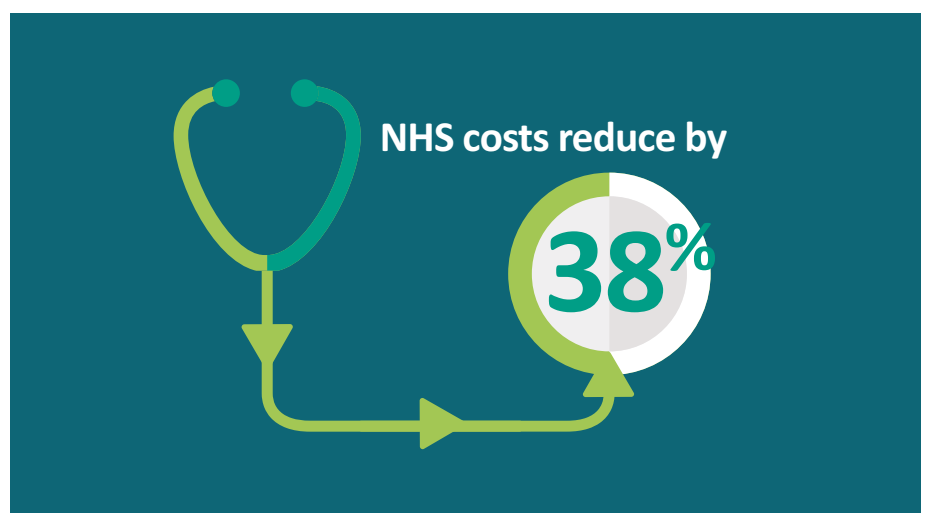
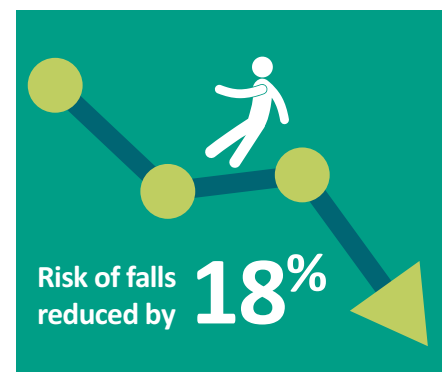
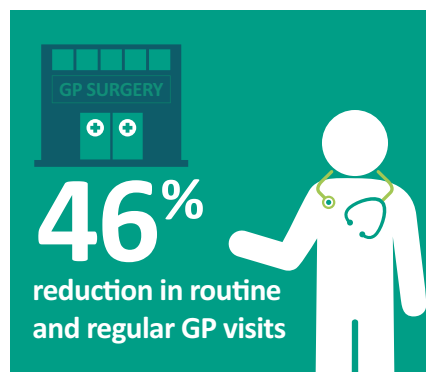
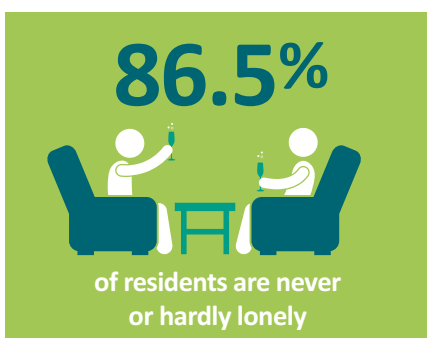
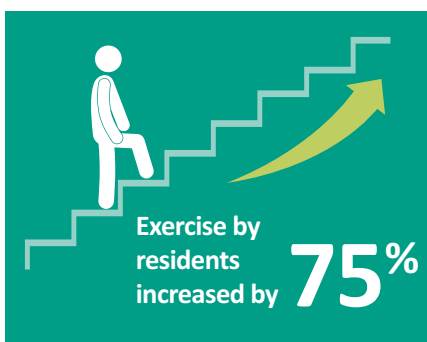
*My mum has been living in Earlsdon Park Village for 3 years and is very happy there. There's something for everyone.*

Daughter of Earlsdon Park resident

## Making an impact

Findings from an independent study into healthy ageing carried out by Aston and Lancaster Universities (2019) evaluated how our unique model of integrated homes, health and social care makes a real difference to older people's lives.

The research found that after moving in, residents felt a significant improvement to their physical and mental health.





## Light and spacious apartments

All homes at Earlsdon Park Village provide independent living as part of a wider, bustling community.

Each home has been thoughtfully designed to enhance your life. We've thought about every last detail so you don't need to worry about a thing. All you need to do is move in and start making memories.



Images show a typical ExtraCare village apartments



Get in touch with a village representative on 024 7771 8252 if you would like to find out more about our homes.



## Key facts

- The village opened in 2017
- Our 322 individual homes are made up of one and two bedroom apartments, with 270 properties for sale and 52 available for social rent.
- Affordable living options are provided through social rent or shared ownership
- Properties can also be purchased outright
- The village team provides care to residents who require it
- Dependent on individual circumstances we can support significant assessed care needs, including dementia
- We have car parking available for residents and guests



## Here's what our residents say about our villages

Here's what some of our residents across the village network have to say about their ExtraCare homes:

‘I’m very happy, it’s fantastic and the village is an amazing concept. Everything you want is here and I’ve made good friends along the way.

**Sheena, 66, runs her village choir**

‘I’m glad I came, there are always things to do and people to talk to - it’s been a good move.

**Nadine, 71, volunteers on reception**

‘Sometimes I sing to other residents from my balcony! Nobody minds, it’s brilliant. Everyone is so friendly - what more can I say?

**Ron, 93, loves the security and companionship**

## Did you know...

- ExtraCare is a Registered Charity
- We have a gold award from Investors in People
- We have 20 locations across the UK
- Over 80% of our residents have no care needs
- Those with a limited income find it very affordable to live in our locations
- Pets are welcome to live here too



## Discover the local surroundings

Earlsdon Park Village is in Coventry, the UK's City of Culture. From music, theatre and festivals to museums, cathedrals and medieval history, there's so many things to see and do in the area.

The village is located just down the road from the beautiful art deco Albany Theatre. Productions run throughout the year and include music, dance, comedy and drama performances.

Coventry is also home to many historic buildings which have hosted the likes of Mary, Queen of Scots and William Shakespeare. Coventry Cathedral, St Mary's Guildhall, and the Lunt Roman Fort are just a few of the sites which are available to visit and enjoy.



## Recommend your friend

If a village resident recommends this village to you, we will reward each of you with £500 when you move in.

Ask our friendly team for the 'Recommend your friend' leaflet which includes full terms and conditions.



## Earlsdon Park Village



For more information contact us on:

☎ 024 7771 8252

✉ [earlsdon@extracare.org.uk](mailto:earlsdon@extracare.org.uk)

🖱 [extracare.org.uk](http://extracare.org.uk)

📘 [facebook.com/earlsdonpark](https://facebook.com/earlsdonpark)

Earlsdon Park Village, Albany Road,  
Coventry, CV5 6JQ

If you need a copy of this document in large format, in braille or on audio tape, please contact 02476 506011.

The ExtraCare Charitable Trust: Registered Office: 7 Harry Weston Road, Binley Business Park, Binley, Coventry, CV3 2SN.

Registered Charity No. 327816. Registered in England and Wales No. 2205136.

The information in this magazine is set out as general outline only and was correct at the time of going to press. The information does not in any way form part of a contract or warranty. Any furniture displayed in images is for guidance purposes only and will not be included in your apartment.