

Better lives

at Lovat Fields

➤ **Welcome**

to our vibrant community

➤ **Explore**

the local surroundings

➤ **Enjoy**

the activities on offer



Discover a
taste of Lovat
Fields Village

Edition 3 - April 2024

Welcome to Lovat Fields Village

We're delighted to welcome you to Lovat Fields Village, an ExtraCare Charitable Trust village.

Set in landscaped gardens close to Milton Keynes' Willen Lake, our unique village provides a fulfilling lifestyle with everything under one roof.

We believe that later life is a time for doing more rather than less, staying independent and active – and we've got plenty to choose from.

‘*The exposure to the care my parents have received is absolutely amazing. They have grown into a socialised home and community life and they've never been better.*

Daughter of ExtraCare
Village resident





Enjoy a fantastic range of facilities



Beauty salon



Bistro/
restaurant



Bowling green



Greenhouse



Guest suite



Gym



Hairdressers



Laundrette



Library/
IT suite



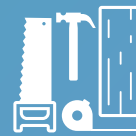
Village Hall



Village shop



Wellbeing
suite



Woodwork
room



Dine in our village bistro

Our village bistro is open daily, serving hot and cold food, drinks, snacks and desserts. Head to the bistro and request a menu, or speak to a member of staff if you have specific dietary requirements.



Weekly activities

When you feel like getting active and being sociable, our superb range of weekly activities will help you make the most of each day. With so many new like-minded friends and neighbours, you'll never be short of things to do.

Try any of our 40+ activities on offer each week including:

- Tai chi
- Arts and crafts
- Walking football
- Circuit training
- Knit and natter
- Quiz night
- Mindfulness activities
- Outdoor exercise classes
- Evening entertainment

Ask one of the team for our activities schedule.





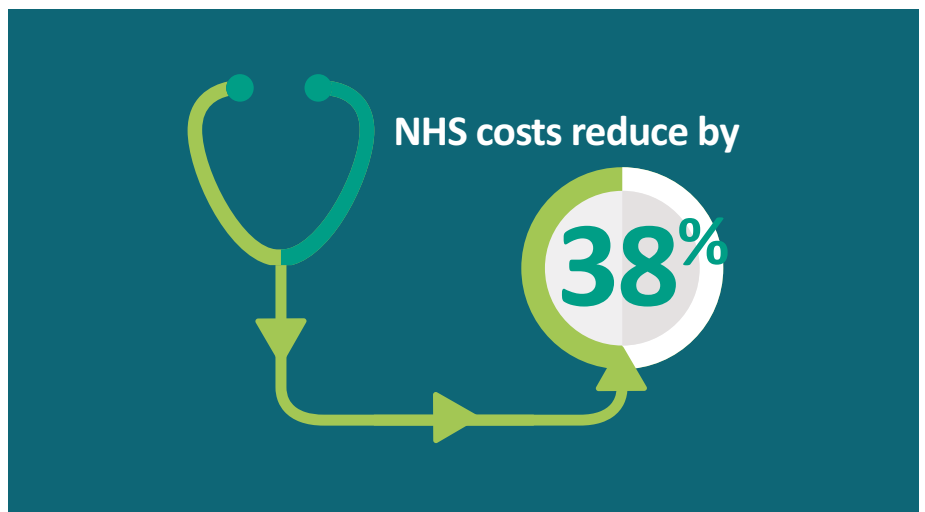
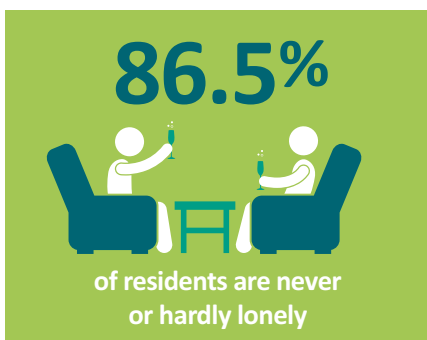
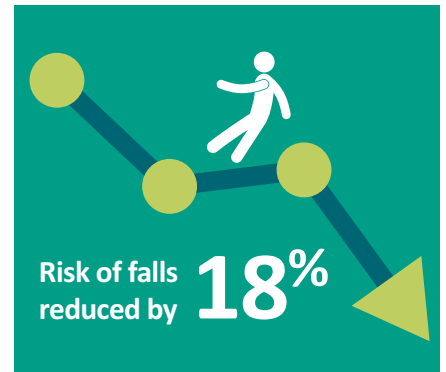
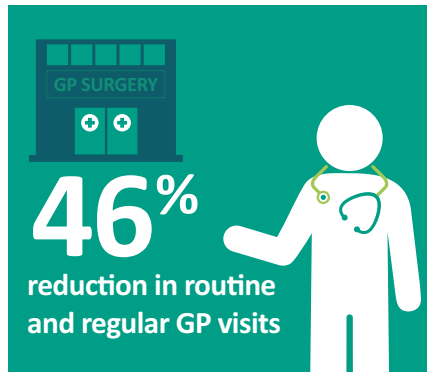
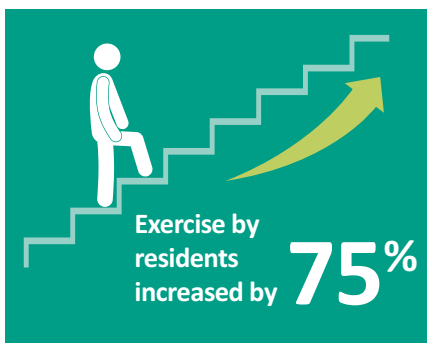
It's terribly important that the example ExtraCare has set is more widely known and communicated to society, particularly to people in local governments so that they can realise the benefits to the health service that these villages bring.

Baroness Sally Greengrass OBE

Making an impact

Findings from an independent study into healthy ageing carried out by Aston and Lancaster Universities (2019) evaluated how our unique model of integrated homes, health and social care makes a real difference to older people's lives.

The research found that after moving in, residents felt a significant improvement to their physical and mental health.



Light and spacious apartments

All homes at Lovat Fields Village provide independent living as part of a wider, bustling community.

Each home has been thoughtfully designed to enhance your life. We've thought about every last detail so you don't need to worry about a thing. All you need to do is move in and start making memories.



Images show a typical ExtraCare village apartments



Get in touch with a village representative on 01908 035068 if you would like to find out more about our homes.



Key facts

- The village opened in 2007
- Our 300 homes are made up of one and two bedroom apartments
- Affordable living options are provided through social rent or shared ownership
- Properties can also be purchased outright
- The village team provides care to residents who require it
- Dependent on individual circumstances we can support significant assessed care needs, including dementia
- We have car parking available for residents and guests



Here's what our residents say about our villages

Here's what some of our residents across the village network have to say about their ExtraCare homes:

‘I'm very happy, it's fantastic and the village is an amazing concept. Everything you want is here and I've made good friends along the way.

Sheena, 66, runs her village choir

‘I'm glad I came, there are always things to do and people to talk to - it's been a good move.

Nadine, 71, volunteers on reception

‘Sometimes I sing to other residents from my balcony! Nobody minds, it's brilliant. Everyone is so friendly - what more can I say?

Ron, 93, loves the security and companionship

Did you know...

- ExtraCare is a Registered Charity
- We have a gold award from Investors in People
- We have 20 locations across the UK
- Over 80% of our residents have no care needs
- Those with a limited income find it very affordable to live in our locations
- Pets are welcome to live here too

Discover the local surroundings

The village is located in Willen, a district of Milton Keynes, and is one of the most ancient villages in Buckinghamshire. There are plenty of shops and restaurants in the town centre as well as museums and a theatre.

There's lots of green space in the local area too – across Milton Keynes is the Park Trust, an independent, self funded charity. It cares for and maintains over 6,000 acres of parkland and green space. As well as Willen Lake, the charity looks after the river valleys, ancient woodlands, lakesides, parks and landscaped areas alongside the main roads.



Recommend your friend

If a village resident recommends this village to you, we will reward each of you with £500 when you move in.

Ask our friendly team for the 'Recommend your friend' leaflet which includes full terms and conditions.



Lovat Fields Village



For more information contact us on:

☎ 01908 035068

✉ linda.bunn@extracare.org.uk

🖱 extracare.org.uk

Lovat Fields, Japonica Lane, Brickhill Street, Willen, Milton Keynes, MK15 9ED

If you need a copy of this document in large format, in braille or on audio tape, please contact **02476 506011**.

The ExtraCare Charitable Trust: Registered Office: 7 Harry Weston Road, Binley Business Park, Binley, Coventry, CV3 2SN.

Registered Charity No. 327816. Registered in England and Wales No. 2205136.

The information in this magazine is set out as general outline only and was correct at the time of going to press. The information does not in any way form part of a contract or warranty. Any furniture displayed in images is for guidance purposes only and will not be included in your apartment.